

DA Lubricator

Manually Operated, Dual Line, Grease & Oil

General

The DA series manual grease lubricator is a double-action piston high pressure pump, ideally suited for dual line systems. Suction filter screen is located at inlet and a grease level indicator assembled on the top cover.

Application

The DA lubricator is widely used in steel plants, mines and heavy-duty industrial applications, as well as on heavy-duty and port machinery.

Operation

As the operating lever is moved back and forth, the rack drives piston to and fro, pressing the lubricant through a check valve and into the outlet. In dual line systems, the lubricator is affixed to a divider valve. As lubricant from the pump drives the distributor piston to one side on the divider valve, pressure increases and remains that way, until direction conversion knob is used to change the direction of the pressure. When this occurs, one line relieves pressure and the other delivers lubricant.

Operation Instructions

1. Fill clean grease into reservoir through inlet on left side of the pump until grease level indicator on the reservoir cover stops.
2. Move the operating lever back and forth then pump to press grease to outlet.
3. Pull out direction conversion knob at the front of pump to discharge lubricant from the front outlet; insert knob to discharge pump from back outlet.
4. Before the pump stops, remember to pull out or insert the direction conversion knob to relieve system pressure.
5. Clean reservoir according to ambient environment.

Technical Data

Reservoir Capacity	Grease	2 kg (4.5 lb), 4 kg (8.25 lb), 6 kg (12.5 lb)
	Oil	2.4 liter (2.5 qt)
Discharge		7.4mm (0.45 cu. in.)
Viscosity Range	Grease	NLGI #000 - NLGI #2
	Oil	N68 and upwards
Internal Filter		Available on all models
Pressure Gauge		Available on all models
Cycle Indicator		Available on some models



BIJUR DELIMON INTERNATIONAL

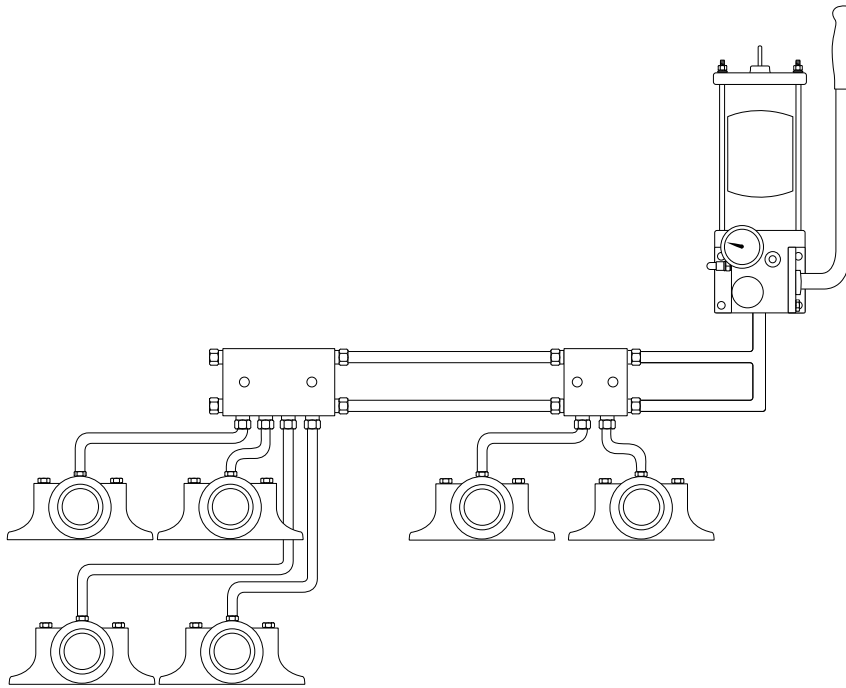
(919) 465 4448 LOCAL
(800) 631 0168 TOLL-FREE
(919) 465 0516 FAX

WWW.BIJURDELIMON.COM

2100 Gateway Centre Blvd., Suite 109
Morrisville, NC 27560

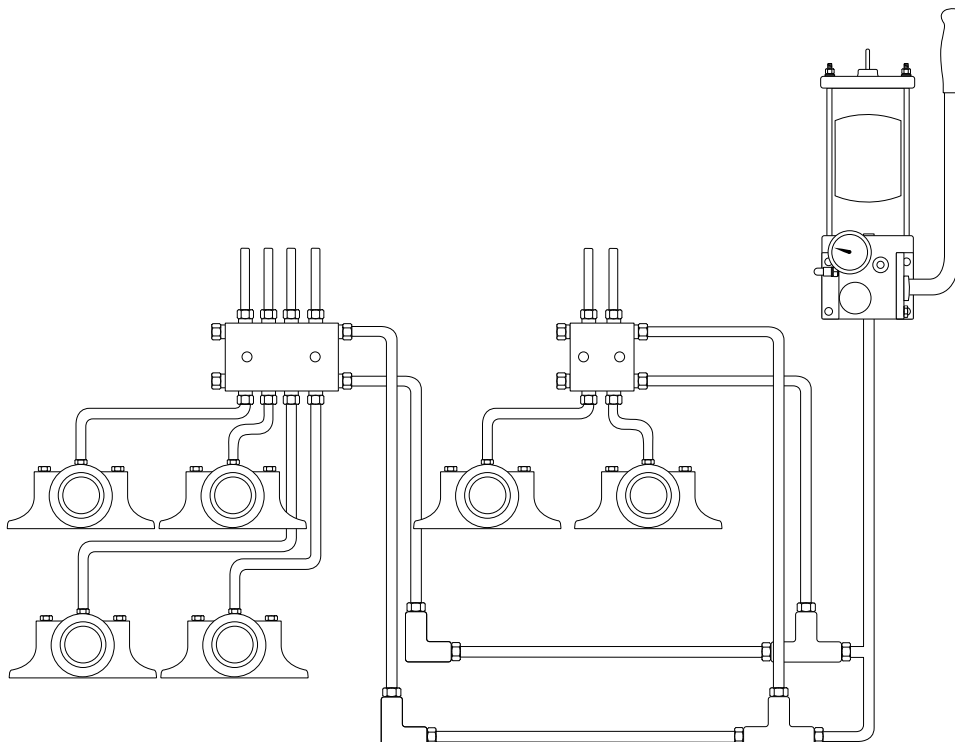
Typical System Layout

Working with DM Dual Line Distributor



Illustrations and specifications are not binding in detail. Designs are subject to modification and improvement without notice.

Working with DD Dual Line Distributor



BIJUR DELIMON INTERNATIONAL

(919) 465 4448 LOCAL
(800) 631 0168 TOLL-FREE
(919) 465 0516 FAX

WWW.BIJURDELIMON.COM

2100 Gateway Centre Blvd., Suite 109
Morrisville, NC 27560

Maintenance

1. Use clean grease.
2. Verify the presence of grease in reservoir when using.
3. Inspect pump regularly to be sure no pipes are damaged. If necessary, replace.
4. Make sure all components are well connected.

Troubleshooting

Symptom	Possible Cause	Remedy
Pump does not build pressure.	1. Plug or adaptor is not tight enough	1. Tighten plugs and adaptors
	2. There is air in system	2. Fill lubricant to remove air in system
No lubricant at outlet.	1. Pipe clogged	1. Use clean lubricant
	2. Leakage in system	2. Tighten plugs and adaptors

How To Order

Name	System Type	Lubricant	Reservoir Capacity	Part #
DA Lubricator	Dual Line	Grease	2 kg (4.5 lb)	DA4101AC
			4 kg (8.25 lb)	DA5101AC
			6 kg (12.5 lb)	DA6101AC
		Oil	2.4 liter (2.5 qt)	DA4101BC

When ordering, specify by name, system type, lubricant, reservoir capacity and part number, e.g. DA lubricator, dual line, grease, 6 kg reservoir, Part #DA6101AC.

BIJUR DELIMON INTERNATIONAL

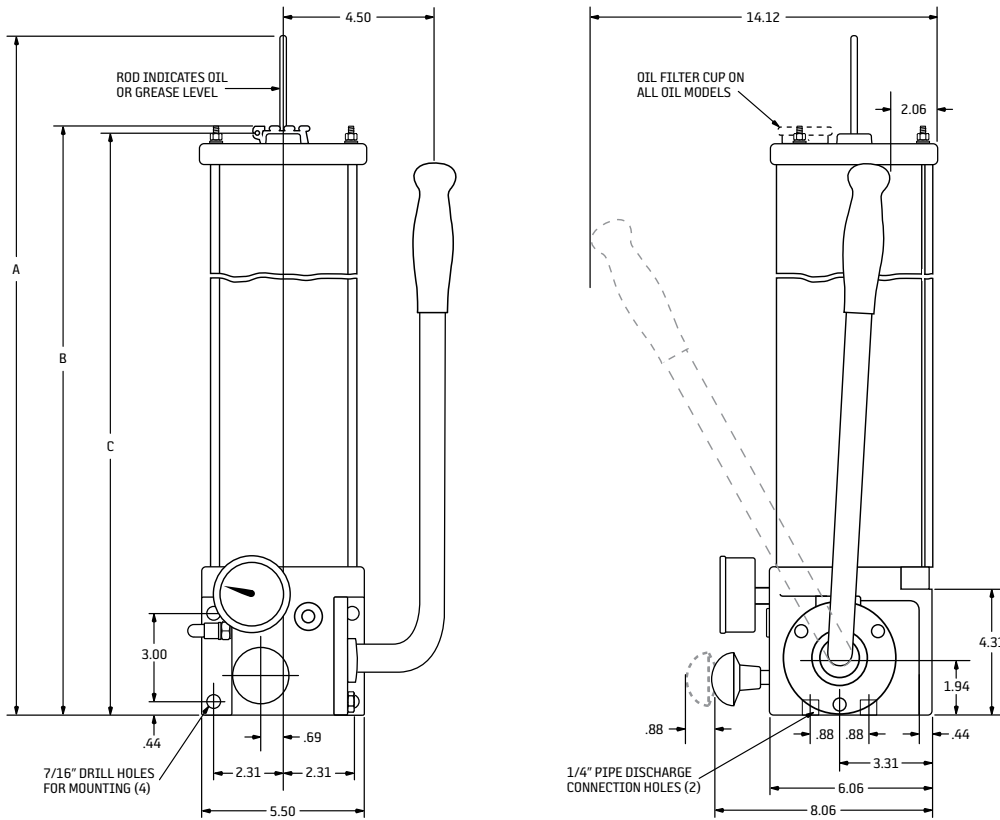
(919) 465 4448 LOCAL
 (800) 631 0168 TOLL-FREE
 (919) 465 0516 FAX

WWW.BIJURDELIMON.COM

2100 Gateway Centre Blvd., Suite 109
 Morrisville, NC 27560

Dimensional Schematics

Measurements shown in inches.



Size		A (Maximum)	B	C
DA4	101A	24	---	14.5
	101B	22	14.6	---
DA5	101A	37	21.1	21
DA6	101A	50.9	28.1	28

BIJUR DELIMON INTERNATIONAL

(919) 465 4448 LOCAL
(800) 631 0168 TOLL-FREE
(919) 465 0516 FAX

WWW.BIJURDELIMON.COM

2100 Gateway Centre Blvd., Suite 109
Morrisville, NC 27560